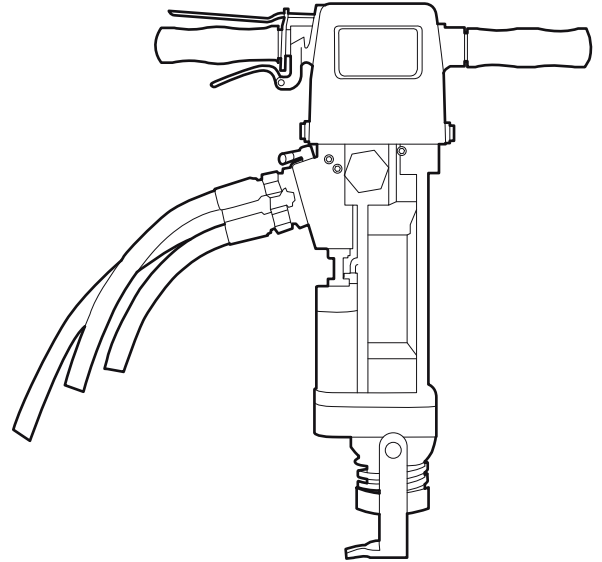


Spare parts list

Rock drills



Contents

General information	5
Spare parts list	6
LHD 23 M	6
Handle standard	10
Labels	12
Kits	13
Seal kit	13
Working tools	14
Hexagon $\frac{7}{8}$ x $4\frac{1}{4}$ in. (22 x 108 mm)	14

General information

This spare parts list applies to the following:

Part number	Description
1801 3800 01	LHD 23 M (clockwise rotation)
1801 3800 02	LHD 23 M (counter clockwise rotation)

Use only authorized parts. Any damage or malfunction caused by the use of unauthorized parts is not covered by Warranty or Product Liability. Any unauthorized use or copying of the contents or any part thereof is prohibited. This applies in particular to trademarks, model denominations, part numbers, and drawings.

Instructions for use

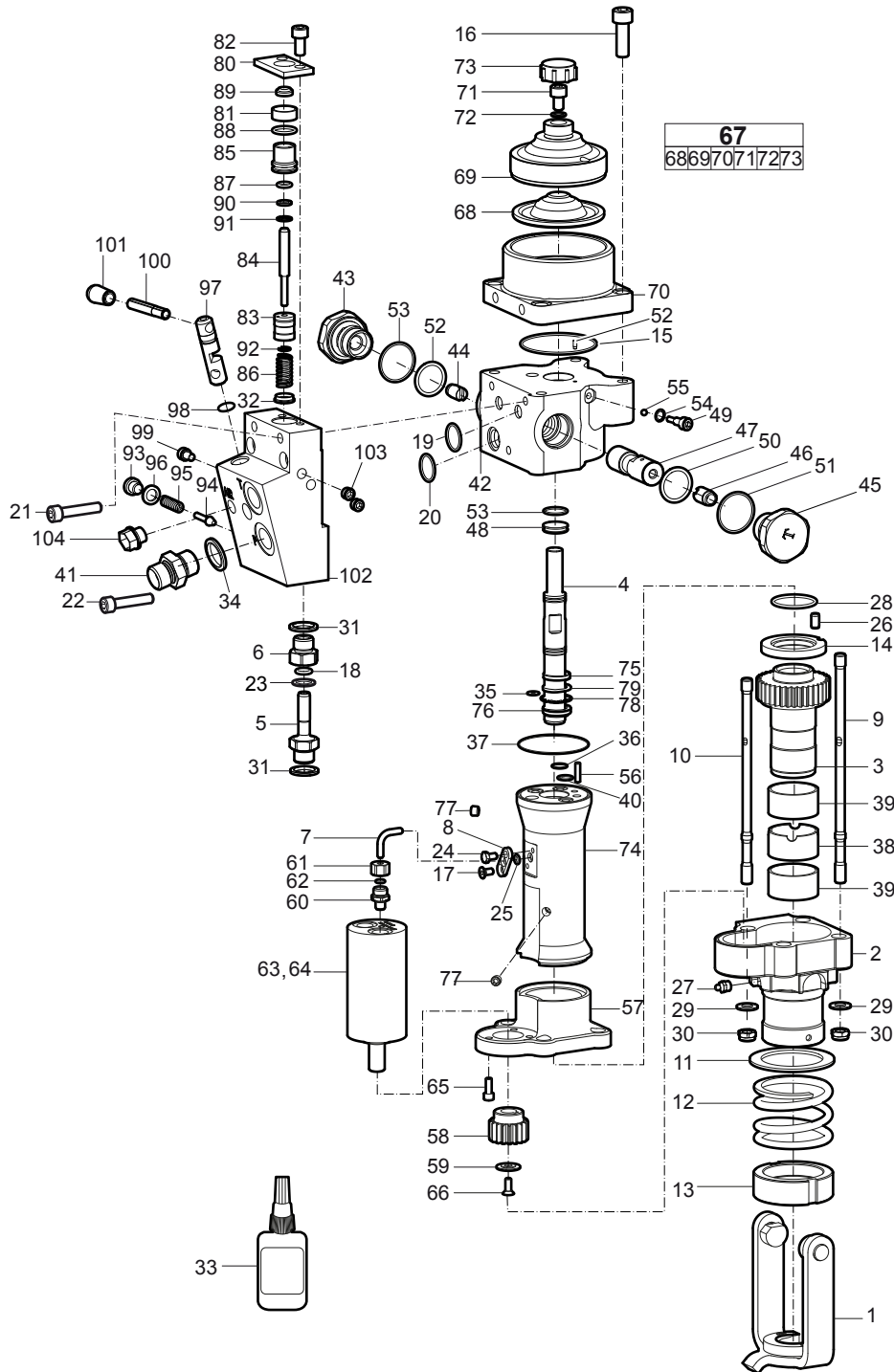
This spare parts list contains no safety regulations and is merely intended to assist in the ordering of spare parts.

For information about operating, servicing, or repairing, the relevant Safety and operating instructions must be consulted at all costs.

Please observe the safety instructions listed in the relevant Safety and operating instructions!

Spare parts list

LHD 23 M



No.	Description	Remark	Quantity	Part number
1	Chisel retainer complete		1	3371 8170 54
2	Gear flange		1	3371 8171 77
3	Bushing		1	3371 8171 50
4	Striking piston		1	3371 8171 04
5	Flange socket		2	3371 8171 74
6	Pipe holder		2	3371 8171 75
7	Drain pipe		1	3371 8171 07
8	Tightening plate		1	3371 8171 08
9	Stay bolt long		2	3371 8171 09
10	Stay bolt short		2	3371 8171 10
11	Washer	for spring	1	3371 8171 45
12	Spring	for chisel retainer	1	3371 8171 46
13	Coupling nut	for spring	1	3371 8171 47
14	Thrust washer		1	3371 8171 41
15	O-ring	60 x 2 mm 2.36 x 0.08 in.	1	3371 8177 00
16	Screw	M10 x 30 mm	4	3371 8177 20
17	Screw	M6 x 12 mm	1	3371 8177 27
18	O-ring	9.13 x 2.62 mm 0.36 x 0.10 in.	1	3371 8177 55
19	O-ring	20 x 2 mm 0.79 x 0.08 in.	1	3371 8177 01
20	O-ring	16 x 2 mm 0.63 x 0.08 in.	1	3371 8177 02
21	Screw	M8 x 35 mm	1	3377 0004 77
22	Screw	M8 x 50 mm	1	3371 8177 65
23	Back-up ring	10 x 14 mm 0.39 x 0.55 in.	2	3371 8177 56
24	Screw	M6 x 10 mm	1	3371 8177 24
25	O-ring	6 x 2 mm 0.23 x 0.08 in.	1	3371 8177 57
26	Cylinder pin	8 x 14 mm 0.31 x 0.55 in.	1	3371 8177 39
27	Grease nipple	¼ in. RG	1	3371 8167 08
28	O-ring	40 x 3 mm 1.57 x 0.11 in.	1	3371 8177 04
29	Washer	14 mm 0.55 in.	4	3371 8177 18
30	Nut	MF 14 x 1.5 mm	4	3371 8177 14
31	Seal ring	¾ in.	2	3377 0163 75
32	Stop screw	M6 x 12 mm	1	3371 8177 25
33	Loctite®648™	50 ml 1.70 oz	1	3371 8077 37
34	Seal ring	Bonded seal ½in. BS	1	3371 8057 14
35	Protective cap	for ½ in. BSP	2	3371 8173 09
36	O-ring	12 x 1.5 mm 0.47 x 0.06 in.	2	3371 8147 50
37	O-ring	69 x 1.5 mm 2.71 x 0.06 in.	1	3371 8147 51
38	Ina ring IR	Ø45/50 x 25 mm Ø1.77/1.96 x 0.98 in.	1	3371 8171 79
39	Ina ring IR	Ø45/50 x 25 mm Ø1.77/1.96 x 0.98 in.	2	3371 8177 63
40	O-ring	13 x 1.5 mm 0.51 x 0.06 in.	1	3371 8147 49
41	Nipple	½in. BSP M - ½in. BSP M	2	3371 8057 11
42	Valve housing		1	3371 8171 15

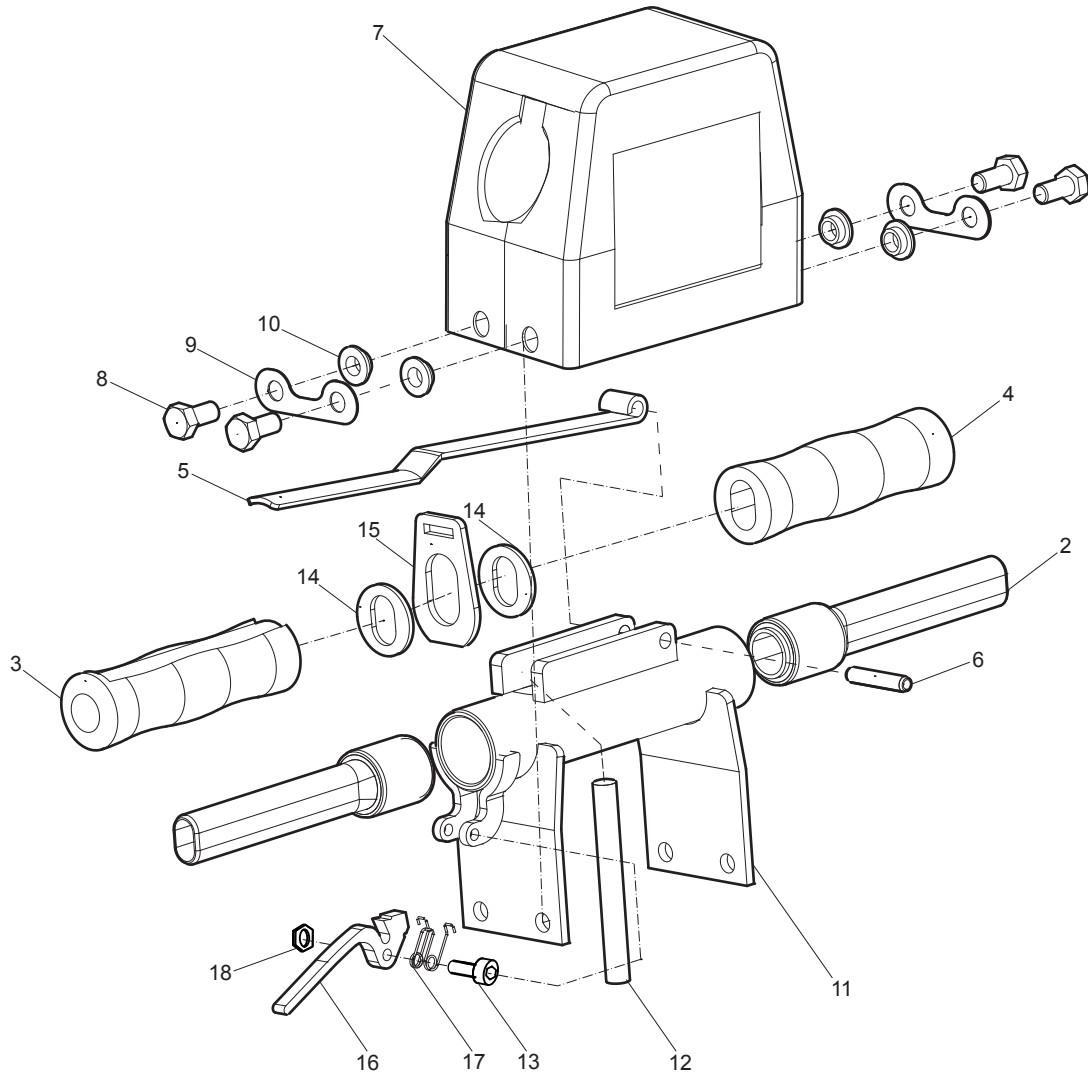
No.	Description	Remark	Quantity	Part number
43	Guide socket P		1	3371 8141 14
44	Auxiliary spool P		1	3371 8141 13
45	Guide socket T		1	3371 8141 16
46	Auxiliary spool T		1	3371 8141 15
47	Spool		1	3371 8141 12
48	Sealing washer		1	3371 8171 54
49	Screw	for check valve	1	3371 8171 55
50	O-ring	24.2 x 3 mm 0.95 x 0.12 in.	2	3371 8147 03
51	O-ring	33 x 2 mm 1.23 x 0.08 in.	2	3371 8147 10
52	Blind nut	Ø3 mm Ø0.12 in.	1	3371 8147 36
53	O-ring	21 x 2 mm 0.82 x 0.08 in.	1	3371 8177 05
54	Seal ring	Ø7 mm / Ø10 x 1 mm 0.28 in. / 0.39 x 0.04 in.	1	3371 8177 12
55	Steel ball	Ø4.5 mm Ø0.18 in.	1	3371 8177 48
56	Roll pin	Ø5 x 20 mm 0.20 x 0.79 in.	1	3371 8177 41
57	Motor flange		1	3371 8171 33
58	Gear wheel		1	3371 8171 35
59	Back-up washer		1	3371 8171 36
60	Packing gland		1	3371 8171 48
61	Coupling nut		1	3371 8171 49
62	O-ring	6 x 2 mm 0.23 x 0.08 in.	1	3371 8177 57
63	Hydraulic motor	OMM 32, clockwise rotation	1	3371 8177 46
64	Hydraulic motor	OMM 32, counter-clockwise rotation	1	3371 8172 05
65	Screw	M6 x 15 mm	3	3371 8177 26
66	Screw	M6 x 16 mm	1	3371 8177 64
67(68-73)	Accumulator, complete		1	3371 8170 02
68	Diaphragm		1	3371 8140 52
69	Accumulator cover		1	3371 8141 02
70	Accumulator body		1	3371 8171 11
71	Charging screw		1	3371 8131 03
72	Seal ring	8.7 / 13 x 1 mm 0.34 / 0.51 x 0.04 in.	1	3371 8147 09
73	Protective cap	M24 x 1.5 mm	1	3371 8137 10
74	Cylinder		1	3371 8171 02
75	Seal	Ø28 mm / Ø36 x 5.7 mm Ø1.10 in. / Ø1.42 x 0.22 in.	1	3371 8141 72
76	Seal	Ø28 mm / Ø38 x 7 / 10 mm Ø1.10 in. / Ø1.49 x 0.28 / 0.39 in.	1	3371 8147 07
77	Fitting	02 KRG	3	3371 8147 33
78	Locking ring	Ø38 mm 1.49 in.	1	3371 8147 54
79	Back-up washer	28.7 x 38 x 2 mm 1.13 x 1.49 x 0.07 in.	1	3371 8141 69
80	Trigger plate		1	3371 8171 86
81	Spacer pipe		1	3371 8171 87
82	Screw	M8 x 16 mm	2	3377 1215 08
83	Trigger spool		1	3371 8141 61
84	Trigger rod		1	3371 8151 66
85	Packing gland		1	3371 8141 20
86	Trigger spring		1	3371 8141 63

No.	Description	Remark	Quantity	Part number
87	O-ring	Ø8.3 x 2.4 mm Ø0.32 x 0.9 in.	1	3371 8147 00
88	O-ring	Ø16.3 x 2.4 mm 0.64 x 0.9 in.	1	3371 8147 02
89	Wiper	Ø8/Ø14 x 3.5/5 mm Ø0.31/0.55 x 0.13/0.19 in.	1	3371 8055 03
90	Back-up ring		1	3371 8147 01
91	Circlip	SB 12	1	3371 8147 12
92	Circlip	SW 8	2	3371 8147 32
93	Plug	G ½in. incl. seal	1	3371 8177 40
94	Torque limiter		1	3371 8171 30
95	Spring	for torque limiter	1	3371 8171 31
96	Seal ring	Bonded seal ½in. BSP	1	3377 0161 25
97	Air valve		1	3371 8171 85
98	O-ring	Ø10 x 2 mm 0.39 x 0.07 in.	1	3376 1000 08
99	Screw	M6 x 10 mm	1	3371 8177 28
100	Roll pin	Ø8 x 50 mm Ø0.31 x 1.96 in.	1	3371 8177 67
101	Tip	Ø8 mm Ø0.31 in.	1	3371 8177 66
102	Connecting block		1	3371 8171 88
103	Fitting	02 KRG	2	3371 8147 33
104	Plastic plug	¼in.	1	3371 8177 42

LOCTITE is a registered trademark of Henkel Corporation. 648 is a trademark of Henkel Corporation.

Handle standard

1																	
2	3	4	5	6	7	8	9	10	11	12	13	14	15	16	17	18	



No.	Description	Remark	Quantity	Part number
1(2-18)	Handle standard, complete	With plastic cover	1	3371 8200 45
2	Handle standard		2	3371 8202 04
3	Rubber handle		1	3371 8201 35
4	Rubber handle		1	3371 8201 34
5	Trigger	Standard	1	3371 8202 38
6	Roll pin	Ø 0.31 x 1.6 in. Ø 8 x 40 mm	1	3371 8157 33
7	Top cover		1	3371 8200 41
8	Screw	M10 x 20 mm	4	3371 8157 22
9	Nab		2	3371 8151 31
10	Spacer		4	3371 8151 13
11	Bracket		1	-
12	Nylon guide		1	3371 8202 07
13	Screw	M6 x 30 mm	1	3378 2060 44
14	Washer nylon	Ø 0.83 x 1.46 x 0.12 in. Ø 21 x 37 x 3 mm	2	3371 8207 47
15	Lock plate		1	3371 8202 37
16	Safety trigger		1	3371 8202 36
17	Spring		1	3371 8201 52
18	Nut	M6	1	3371 8147 16

Labels

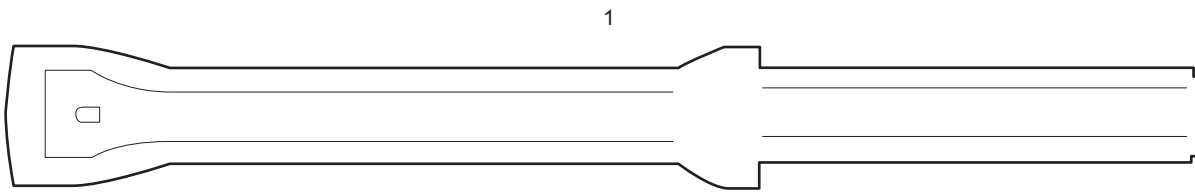
Description	Remark	Quantity	Part number
Labels			-
Safety		1	3371 8960 61
Pressure charge		1	3371 8960 62
Logotype	Atlas Copco	2	3371 8960 63
EHTMA	Category C, 20l/min	1	3371 8960 47

Kits

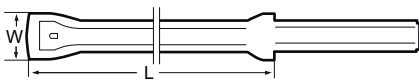
Seal kit

Description	Remark	Quantity	Part number
Seal kit			3371 8170 35
O-ring	Ø60 x 2 mm Ø2.36 x 0.07 in.	1	3371 8177 00
O-ring	Ø9.13 x 2.62 mm Ø0.35 x 0.1 in.	2	3371 8177 55
O-ring	Ø20 x 2 mm Ø0.78 x 0.07 in.	2	3371 8177 01
O-ring	Ø16 x 2 mm Ø0.62 x 0.07 in.	1	3371 8177 02
Pressure ring	Ø10 x Ø14 mm Ø0.39 x Ø0.55 in.	3	3371 8177 56
O-ring	Ø6 x 2 mm Ø0.23 x 0.07 in.	2	3371 8177 57
O-ring	Ø40 x 3 mm Ø1.57 x 0.11 in.	1	3371 8177 04
Ring u-seal	¾in.	2	3377 0163 75
O-ring	Ø12 x 1.5 mm 70 SH NBR Ø0.47 x 0.05 in. 70 SH NBR	2	3371 8147 50
O-ring	Ø69 x 1.5 mm 70 SH NBR Ø2.71 x 0.05 in. 70 SH NBR	1	3371 8147 51
O-ring	Ø13 x 1.5 mm 70 SH NBR Ø0.51 x 0.05 in. 70 SH NBR	1	3371 8147 49
O-ring	Ø24.4 x 3 mm 70 SH NBR Ø0.96 x 0.11 in. 70 SH NBR	2	3371 8147 03
O-ring	Ø33 x 2 mm 70 SH NBR Ø1.29 x 0.05 in. 70 SH NBR	2	3371 8147 10
O-ring	Ø21 x 2 mm Ø0.82 x 0.07 in.	1	3371 8177 05
Seal ring	Ø7 / Ø10 x 1 mm Ø0.27 / Ø0.39 x 0.03 in.	1	3371 8177 12
Seal u-seal	Ø8.7 mm (M8) Ø0.34 in.	1	3371 8147 09
Seal	Ø28 / Ø36 / 5.7 mm Ø1.10 / Ø1.41 / 0.22 in.	1	3371 8141 72
Wiper	Ø28 / Ø38 / 7 / 10 mm Ø1.10 / Ø1.49 / 0.27 / 0.39 in.	1	3371 8147 07
Washer	Ø28.7 x 38 x 2mm Ø1.12 x 1.49 x 0.07 in.	1	3371 8141 69
Circlip	J38	1	3371 8147 54
Protective cap	M24 x 1.5 mm	1	3371 8137 10
O-ring	Ø8.3 x 2.4 mm 90 SH NBR Ø0.32 x 0.09 in. 90 SH NBR	1	3371 8147 00
O-ring	Ø16.3 x 2.4 mm 70 SH NBR Ø0.64 x 0.09 in. 70 SH NBR	1	3371 8147 02
Wiper	Ø8 / Ø14 x 3.5 / 5 mm Ø0.31 / Ø0.55 x 0.13 / 0.19 in.	1	3371 8055 03
Back-up ring	Ø8 x 12 x 1.5 mm Ø0.31 x 0.47 x 0.05 in.	1	3371 8147 01
Bonded seal ring	¾in.	1	3377 0161 25
O-ring	Ø10 x 2 mm Ø0.39 x 0.07 in.	1	3376 1000 08
Protective cap	¾in.	1	3371 8177 42
Seal u-seal	Ø21.5 mm ½.	2	3371 8057 14
Circlip	SB 12	1	3371 8147 12

Working tools



Hexagon $\frac{7}{8}$ x $4\frac{1}{4}$ in. (22 x 108 mm)



No.	Description	W (mm)	L (mm)	Wt (kg)	Part number
1	Drill steel	34	800	3.0	714-0834,05-02
		33	1600	5.2	714-1633,05-02
		32	2400	8.0	714-2432,05-02
		31	3200	10.2	714-3231,05-02
		30	4000	12.9	714-4030,05-02
		29	4800	15.1	714-4829,05-02

No.	Description	W (in.)	L (in.)	Wt (lb)	Part number
1	Drill steel	$1\frac{11}{32}$	$31\frac{1}{2}$	6.6	714-0834,05-02
		$1\frac{5}{16}$	63	11.4	714-1633,05-02
		$1\frac{1}{4}$	$94\frac{1}{2}$	17.6	714-2432,05-02
		$1\frac{7}{32}$	126	22.5	714-3231,05-02
		$1\frac{3}{16}$	$157\frac{1}{2}$	28.4	714-4030,05-02
		$1\frac{3}{64}$	189	33.3	714-4829,05-02



Any unauthorized use or copying of the contents or any part thereof is prohibited.
This applies in particular to trademarks, model denominations, part numbers, and drawings.

© 2012 Atlas Copco Construction Tools AB | No. 3392 5014 01d | 2012-11-30

www.atlascopco.com